

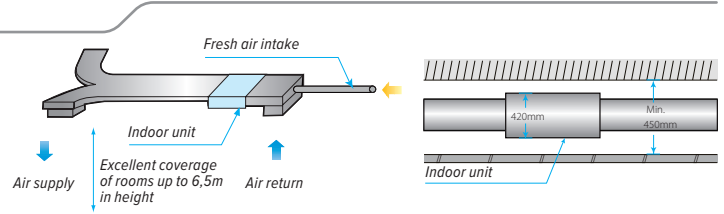
HIGH STATIC PRESSURE DUCT

CN-2-XMi D71÷D560



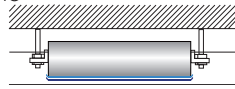
FLEXIBLE DUCT DESIGN

The High Static Pressure Duct indoor unit offers external static pressures of up to 400 Pa, allowing the use of long ducts. With a height of just 420 mm (units D71 to D160), only 450 mm of ceiling space is required.



DOUBLE-SKIN DRAINAGE PAN

A double-skin drainage pan provides double protection for ceilings (units D71 to D160).



EASY INSTALLATION

Flanges for air inlet/outlet ducts are fitted as standard on the High Static Pressure Duct. On units D71 to D160, the expansion valve is fitted inside the unit, requiring no extra connection.

STATIC PRESSURE WITH 20 STEPS CONTROL

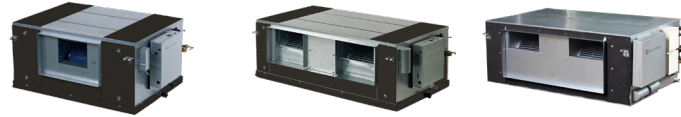
Depending on the installation environment, units can be precisely set up to 20 steps of static pressure/airflow rate combinations via wired remote controller, providing comfortable environment suitable for any application.



20 steps static pressure control

technical data

CN-2-XMi D71÷D560



HIGH STATIC PRESSURE DUCT

Size	CN-2-XMi	D71	D80	D90	D112	D140	D160	D200	D250	D280	D400	D450	D560	
Cooling ⁽¹⁾	Capacity	kW	7,1	8,0	9,0	11,2	14,0	16,0	20,0	25,0	28,0	40	45	56
	Power input	W	180	180	220	380	420	700	990	1200	1200	1800	1800	2272
Heating ⁽²⁾	Capacity	kW	8,0	9,0	10,0	12,5	16,0	17,0	22,5	26,0	31,5	45	56	63
	Power input	W	180	180	220	380	420	700	990	1200	1200	1800	1800	2272
Pipe connections	Liquid pipe	mm	Ø 9,53	Ø 9,53	Ø 9,53	Ø 9,53	Ø 9,53	Ø 9,53	Ø 12,7	Ø 12,7	Ø 12,7	Ø 15,9	Ø 15,9	Ø 15,9
	Gas pipe	mm	Ø 15,9	Ø 15,9	Ø 15,9	Ø 15,9	Ø 15,9	Ø 15,9	Ø 22,2	Ø 22,2	Ø 22,2	Ø 28,6	Ø 28,6	Ø 28,6
	Drain pipe	mm	OD Ø 25	OD Ø 25	OD Ø 25	OD Ø 25	OD Ø 25	OD Ø 25	OD Ø 32	OD Ø 32	OD Ø 32	OD Ø 32	OD Ø 32	OD Ø 32
Dimensions (Width x Height x Depth) ⁽⁵⁾	mm	965×423	965×423	965×423	965×423	1322×423	1322×423	1454×515	1454×515	1454×515	2010×680	2010×680	2010×680	
Weight		kg	×690	×690	×690	×690	×691	×691	×931	×931	×931	×905	×905	×905
			41	41	51	51	63	63	130	130	130	210	210	218
Air flow rate ⁽³⁾		m ³ /h	1360/1327	1360/1327	1420/1373	1870/1783	2240/2133	2660/2530	4330/4230	4330/4230	4330/4230	6500/6150	6500/6150	7400/7000
			1293/1260	1293/1260	1327/1280	1697/1610	2027/1920	2400/2270	4130/4030	4130/4030	4130/4030	5800/5450	5800/5450	6600/6200
			1227/1193	1227/1193	1233/1187	1523/1437	1813/1707	2140/2010	3930/3830	3930/3830	3930/3830	5100/4750	5100/4750	5800/5400
External static pressure		Pa	100	100	100	100	100	100	170	170	170	300	300	300
			(30**200)	(30**200)	(30**200)	(30**200)	(30**200)	(30**200)	(20**250)	(20**250)	(20**250)	(100**400)	(100**400)	(100**400)
			42/41/40	42/41/40	45/44/43	48/47/46	45/44/43	46/45/44	51/50/50	51/50/50	51/50/50	60/59/58	60/59/58	59/58/57
Sound pressure level ⁽³⁾⁽⁴⁾		dB(A)	40/39	40/39	42/41	45/43	42/41	43/42	49/49	49/49	49/49	57/55	57/55	56/55
			39/38	39/38	40/39	42/41	40/40	41/40	48/47	48/47	48/47	54/52	54/52	53/51
			60/59/58	60/59/58	63/62/61	66/65/64	63/62/61	64/63/62	69/68/68	69/68/68	69/68/68	78/77/76	78/77/76	77/76/75
Sound power level ⁽³⁾⁽⁴⁾		dB(A)	58/57	58/57	60/59	63/61	60/59	61/60	67/67	67/67	67/67	75/73	75/73	74/73
			57/56	57/56	58/57	60/59	58/58	59/58	66/65	66/65	66/65	72/70	72/70	71/69
			220-240/1**/50											
Power supply	V/Ph/Hz	220-240/1**/50												

Data measured at standard external static pressure.

(1) Indoor temperature 27°C DB/19°C WB; Outdoor temperature 35°C DB/24°C WB. Piping length: Interconnecting piping length is 7,5 m, level difference is zero.

(2) Indoor temperature 20°C DB/15°C WB; Outdoor temperature 7°C DB/6°C WB. Piping length: Interconnecting piping length is 7,5 m, level difference is zero.

(3) Data refer to the 7 fan speeds, in descending order.

(4) Sound values are measured in a semi-anechoic room, at a position 1,4 m below the unit.

(5) Unit body dimensions given are the largest external dimensions of the unit, including hanger attachments

accessories

- RM12D Wireless remote controller
- WDC-86E/KD Compact wired controller
- WDC-120G/WK Wired controller

- SBH-04 Drain pump (sizes D71÷D160)
- SBH-05 Drain pump (sizes D200÷D560)

Data contained in this document are not binding and may be changed by the Manufacturer without notice